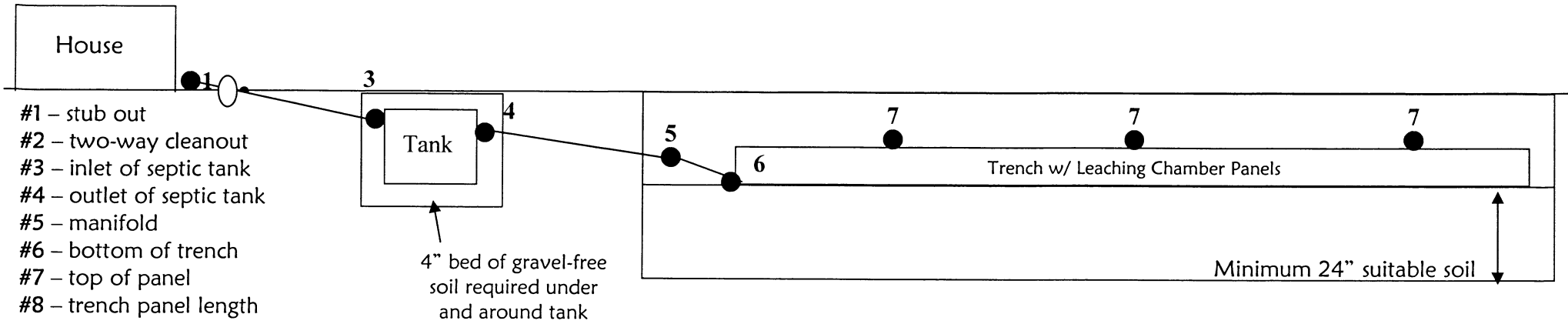


Illustration of OSSF Construction Requirements Using Leaching Chamber Panels

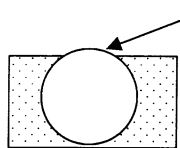
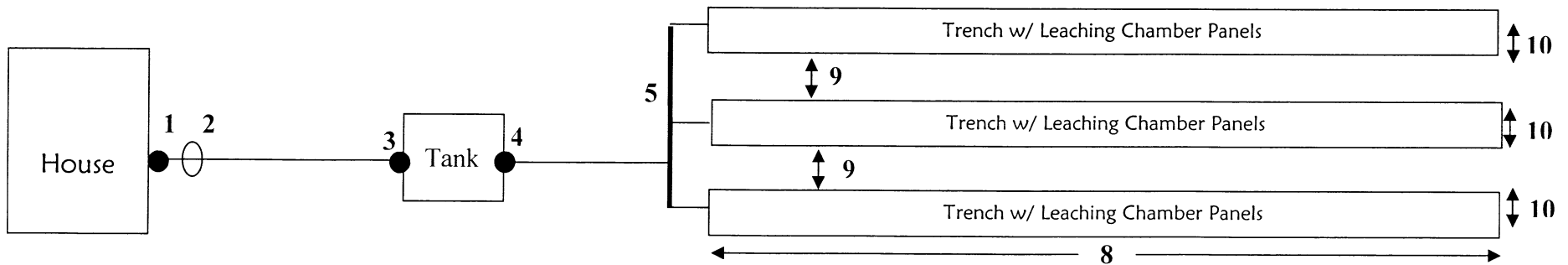


Required Depths (measurements taken from top of all pipes)

- #1 to #3 has a minimum of 1/8th inch of fall per foot of pipe length
- #3 to #4 has a minimum 3 inch drop
- #4 to #6 has a minimum fall of 16 inches
- #5 has a maximum fall of 1/4th inch for total length of pipe
- #7 must be level within (+) or (-) 1 inch every 25 feet

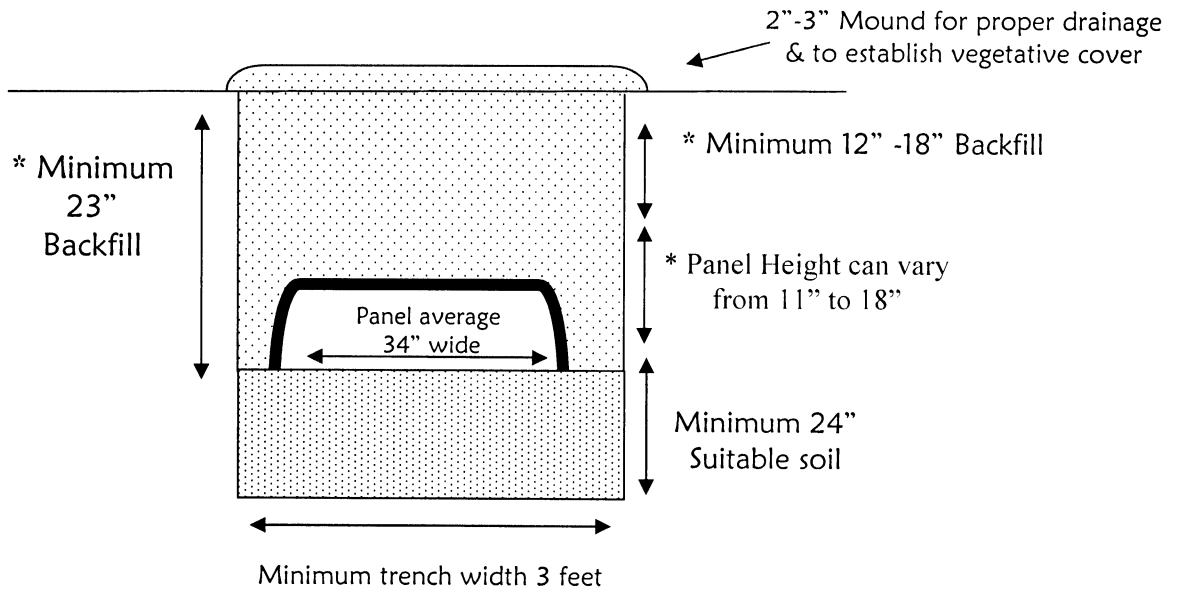
Required Distances

- #1 to #3 has a minimum length of 5 feet
- #4 to #6 has a minimum length of 5 feet
- #8 has a maximum length of 150 feet
- #9 has a minimum width of 3 feet
- #10 has a minimum width of 3 feet for a standard system or a minimum width of 7 feet for a soil substitution

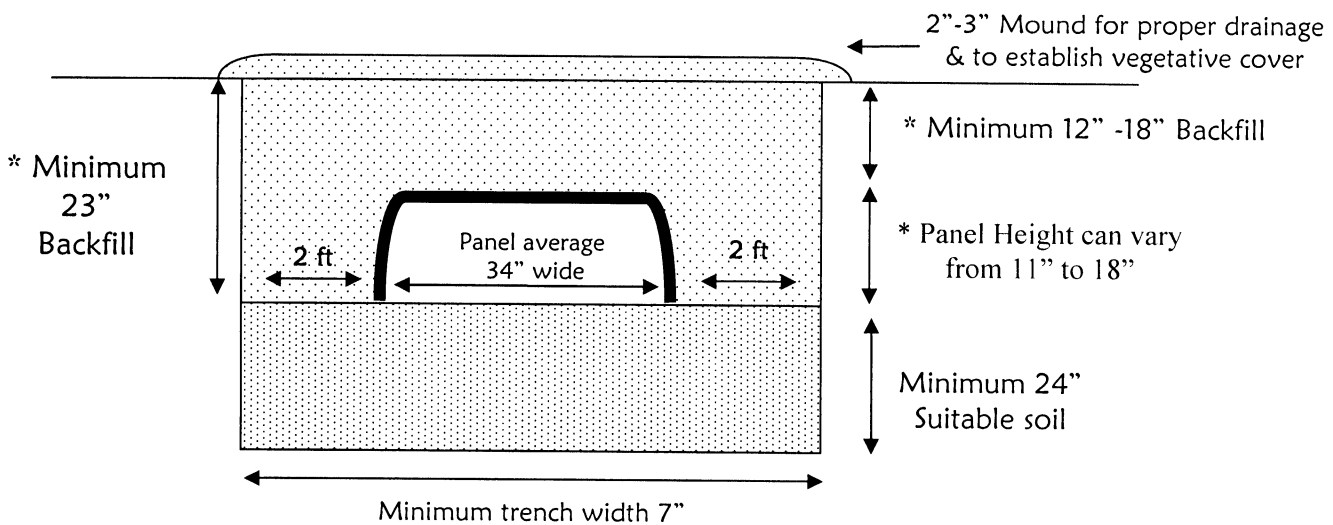


Please Note: For piping stability prior to inspection, use Class II soil and partially backfill and compress soil around all piping before inspection.


CROSS SECTIONAL VIEW OF A STANDARD TRENCH



CROSS SECTIONAL VIEW OF SOIL SUBSTITUTION TRENCH



 Specifies Class II soil

 Specifies Class 1B soil or Class II soil

* Please refer to manufacturer's guidelines